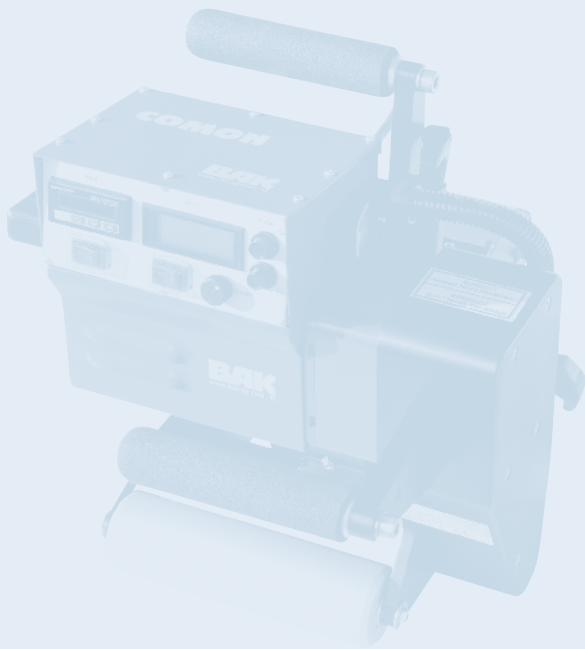


HEAT ON

Plastic welding machines



BAK

www.bak-ag.com

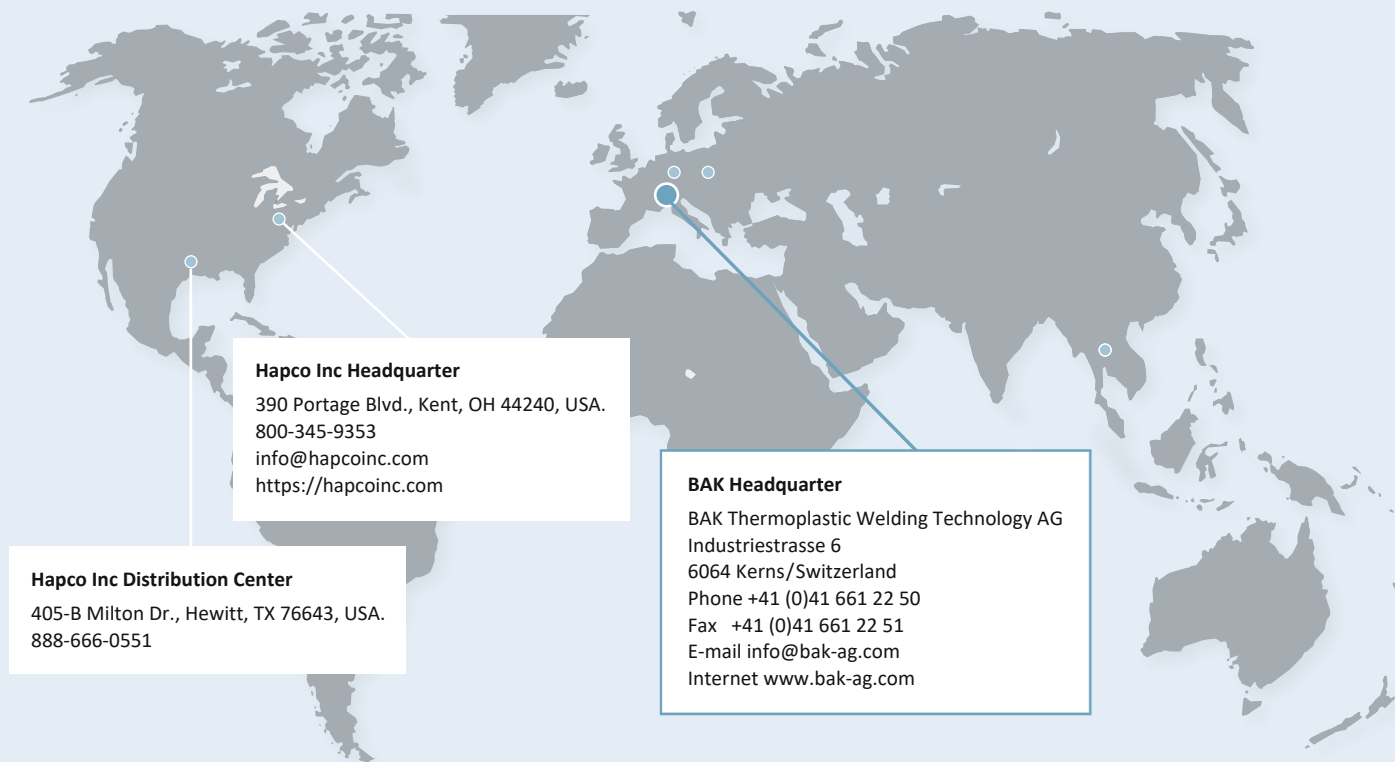


HAPCO INC

390 Portage Blvd., Kent, OH 44240

800-345-9353 • info@hapcoinc.com • <https://hapcoinc.com>

HEAT ON



Hapco Inc Headquarter

390 Portage Blvd., Kent, OH 44240, USA.
800-345-9353
info@hapcoinc.com
<https://hapcoinc.com>

Hapco Inc Distribution Center

405-B Milton Dr., Hewitt, TX 76643, USA.
888-666-0551

BAK Headquarter

BAK Thermoplastic Welding Technology AG
Industriestrasse 6
6064 Kerns/Switzerland
Phone +41 (0)41 661 22 50
Fax +41 (0)41 661 22 51
E-mail info@bak-ag.com
Internet www.bak-ag.com

BAK Thermoplastic Welding Technology AG is a leading manufacturer of plastic welding equipment, extruder, air heaters and blowers.

We present the best solutions for plastic fabrication, pipe construction, roofing, civil engineering, tunnelling, process heat, tarpaulins, flooring and much more.

BAK is a traditional Swiss company with head quarter in Kerns, Obwalden. Our production- and development facilities are in Switzerland, Germany and Austria.

We are offering a wide range of machines and accessories:

- Hot air tools (hand held)
- Wedge welding machines
- Hand extrusion welders
- Industrial heaters
- Heating- & folding machines
- Hot air welding machines
- Hot air blowers
- Industrial extruder
- Industrial blowers
- Test equipment

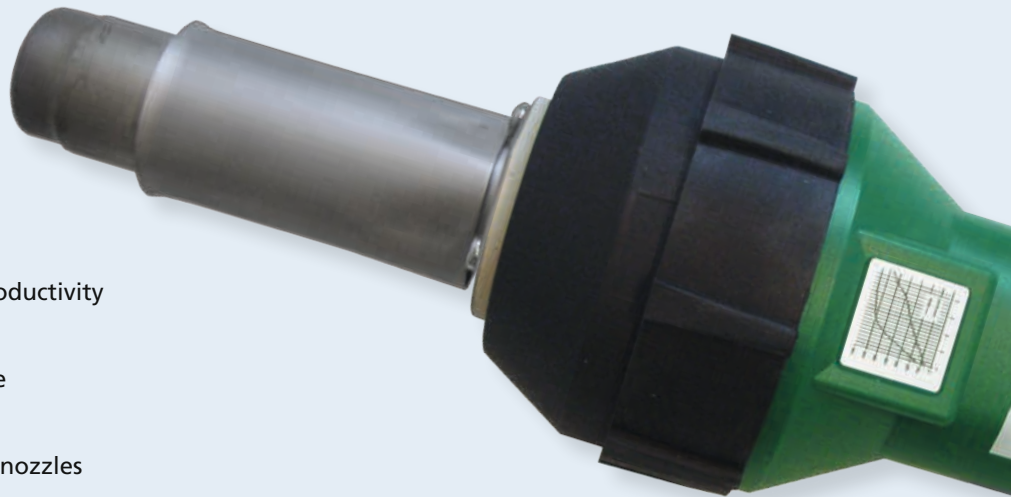
BAK, quality wins! Best quality products and customer service are the most important to us!

Through our experience of many years and the continuous development within the market we make sure to only offer best quality and service to our demanding customers. We guarantee ideal customer service all over the world with the trustful partnership to our distributors who are placed in over 40 countries.

RION

Field tested, cost-effective, handy

- optimal performance / best price
- high speed welding enables high productivity
- stepless adjustment of temperature
- easy welding with ergonomic handle
- high quality
- heater tube for push fit or screw on nozzles
- large accessories range



The high-performance hand gun to weld all different types of thermoplastic materials, for roofing, flooring, tarps, plastic fabrication, etc.



Technical data

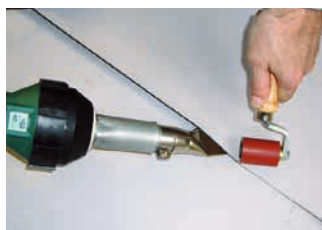
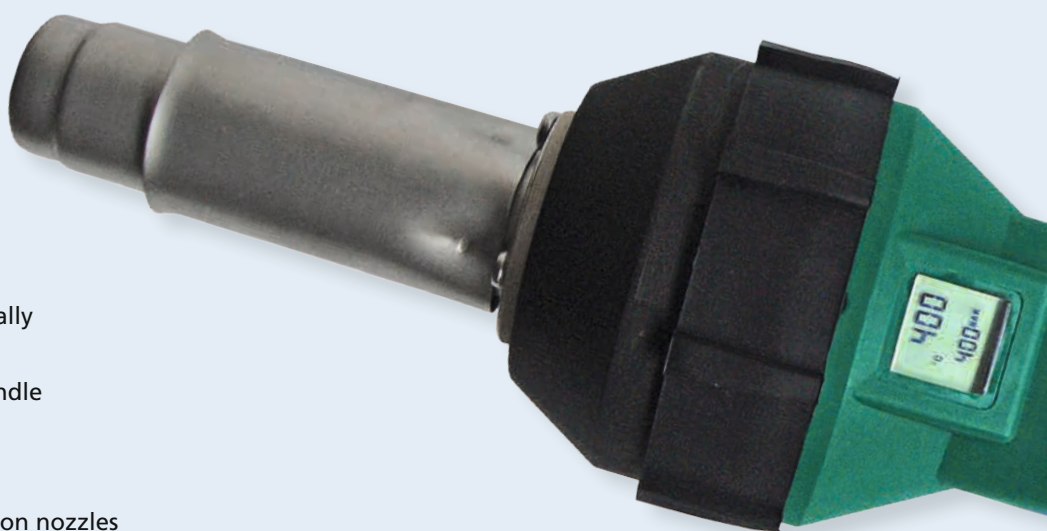
Voltage	V	120 / 230
Frequency	Hz	50 / 60
Power consumption	W	1600
Temperature	°F	68 – 1202
Air flow	l / min	approx. 250
Static pressure	Pa	approx. 3000
Noise level	dB	64
Size	mm	100 x 340, handle Ø 56
Weight	lbs	2.87 with cord
Markings	CE	

On request also available with brushless motor.

RION DIGITAL

Ergonomic,
reliable,
precise

- digital read out of set and actual temperature
- stepless adjustment of electronically controlled temperature
- easy welding with ergonomic handle
- light and handy
- high quality
- heater tube for push fit or screw on nozzles
- large accessories range



We made welding easy for you! The practical digital hot air welding gun with ergonomic handle for the welding of all kinds of thermoplastics.

Technical data		
Voltage	V	120 / 230
Frequency	Hz	50 / 60
Power consumption	W	1600
Temperature	°F	68–1112
Air flow	l / min	approx. 250
Static pressure	Pa	approx. 3000
Noise level	dB	64
Size	mm	100 x 340, handle Ø 56
Weight	lbs	2.87 with cord
Markings	CE	

On request also available with brushless motor.

MARON

Small,
powerful,
flexible

- stepless adjustment of temperature
- adapter tube with heat protection
- for push fit or screw on nozzles
- air supply with blower type HD 140 or SorOn
- connected with blower SorOn for external application



The small welding tool for external air supply with high performance. With heater tube for push fit or screw on nozzles.

Technical data MarOn		
Voltage	V	230 / 120
Frequency	Hz	50 / 60
Power consumption	W	1550 / 1600
Temperature	°F	68 – 1202
Min. air flow (68 °F)	l / min	40
Size	mm	300 x 62, handle Ø 46
Weight	lbs	2.65 with cord and hose
Markings	CE	

Technical data MarOn, connected with SorOn		
Voltage	V	230 / 120
Frequency	Hz	50 / 60
Power consumption	W	1700
Temperature	°F	68 – 1202
Air flow	l / min	max. ca. 300
Static pressure	Pa	ca. 3000
Weight	lbs	5.51
Markings	CE	

WELDON

Small, flexible hose, precise

- rotatable heater tube and air hose
- digital read out of set and actual temperature
- stepless adjustment of electronically controlled temperature
- fatigue-proof welding thanks to ergonomic handle
- cooled heater tube
- nozzle position 360° adjustable
- large accessories range



The small hand tool for plastic fabricators to weld thermoplastic materials. Air supply with external blower (BAK-Air Station) or compressed air.

Technical data		
Voltage	V	230 / 120
Frequency	Hz	50 / 60
Power consumption	W	1000 / 600
Temperature	°F	68 - 1112
Air flow	l/min	min. 40
Pressure	bar	max. 1
Size	mm	295 x 62, handle Ø 38
Weight	lbs	1.65 with 9.84 ft cord, air hose and Y-connection
Markings		CE

WELDON S

Simple,
handy,
low cost

- rotatable heater tube and air hose
- movable and flexible
- stepless adjustment of temperature
- fatigue-proof welding thanks to ergonomic handle
- cooled heater tube
- nozzle position 360° adjustable
- large accessories range



The low-cost hand tool with ergonomic handle for the easy welding of all thermoplastic materials. Air supply with external blower (BAK Air Station) or compressed air.

Technical data

Voltage	V	230 / 120
Frequency	Hz	50 / 60
Power consumption	W	600
Temperature	°F	68 – 842
Air flow	l/min	min. 40
Pressure	bar	max. 1
Size	mm	295 x 62, handle Ø 38
Weight	lbs	1.65 with 9.84 ft cord, air hose and Y-connection
Markings		CE

SORON, AIR STATION

**Movable,
light,
strong**

- small, but powerful
- compact
- for external air supply
- handy
- low noise



The small blowers with high power for air supply on the welding tools MarOn or WeldOn/WeldOn S.

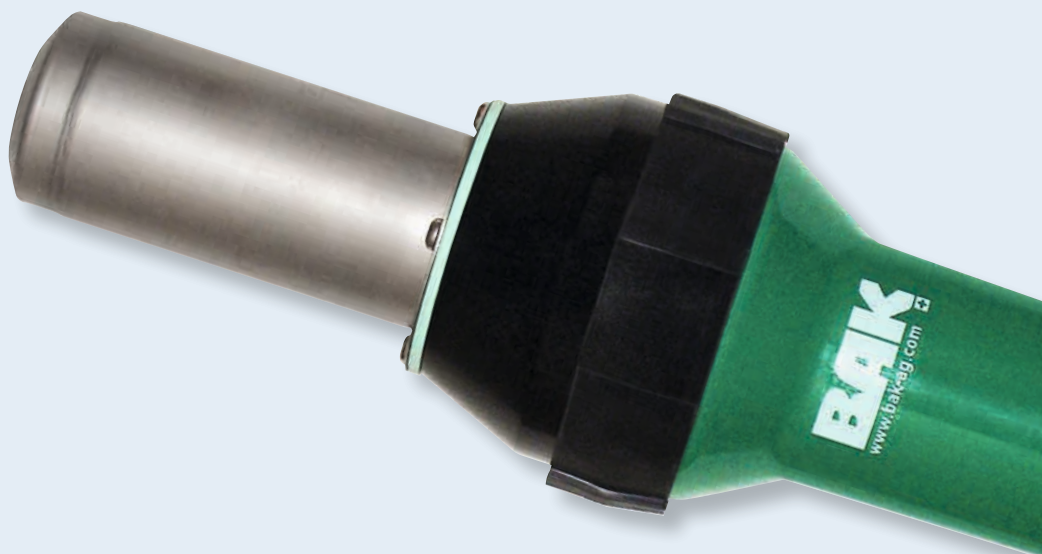
Technical data		SorOn	Air Station N80	Air Station N200
Voltage	V	120 / 230	230	230
Frequency	Hz	50 / 60	50 / 60	50 / 60
Power consumption	W	100	86	215
Air flow (68 °F)	l / min	400	80	200
Static pressure	Pa	5000		
Air outlet (outside)	mm	14,5	14,5	2 x 14,5
Size	mm	260 x 94, handle Ø 64	357 x 214 x 230	475 x 212 x 332
Weight	lbs	2.65 w/ 9.84 ft cord	13.23	33.07
Markings		CE	CE	CE

ERON

Powerful, ergonomic, flexible

Perfect for:

- shrinking
- drying
- soldering
- heating
- activating
- welding
- bending



Stepless temperature adjustment up to 650°C.
Powerful with ergonomic handle, for different
applications and with a complete line of accessories
like nozzles, reflectors, etc.

Technical data

Voltage	V	120 / 230
Frequency	Hz	50 / 60
Power consumption	W	2300 / 2700 / 3400
Temperature	°F	68–1202
Air flow	l / min	approx. 500
Static pressure	Pa	approx. 3000
Noise level	dB	64
Size	mm	320 x 94, handle Ø 64
Weight	lbs	3.31 with cord
Markings	CE	

On request also
available with
brushless motor.

MICON

Innovative,
light,
smart

- stable and robust design
- speed and temperature stepless adjustable
- for the welding of thermoplastic membranes
- constant temperature and speed
- easy to handle
- pressure is given manual



The economic driven hand tool. Closes the gap between hand welding tool and automatic welding machine.

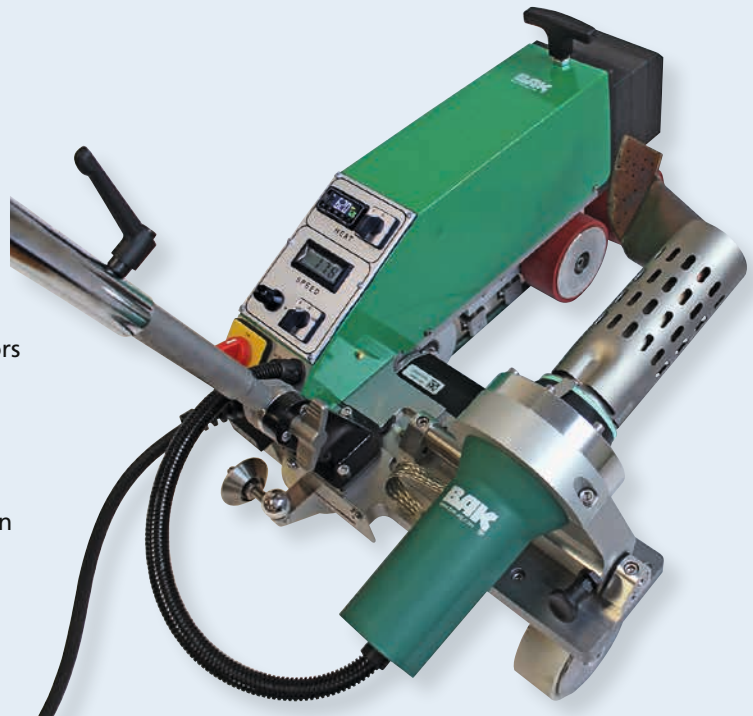
Technical data

Voltage	V	230 / 120
Frequency	Hz	50 / 60
Power consumption	W	2100 / 1650
Temperature	°F	68 – 1112
Speed	ft / min	max. 13
Size (l x w x h)	mm	400 x 170 x 330
Weight	lbs	14.99
Markings		CE

LARON, LARON H

Robust, efficient, high-speed

- designed for the most demanding job sites
- wrinkle-free welding
- continuous operation possible because of brushless motors
- digital display of temperature and speed
- automatic drive start system
- air flow, speed and temperature stepless adjustable
- for the welding of roofing membranes, modified bitumen and tarpaulins
- welds standard TPO up to 15–20 m/min speed (LarOn H)
- world's fastest automatic welding machine (LarOn H)



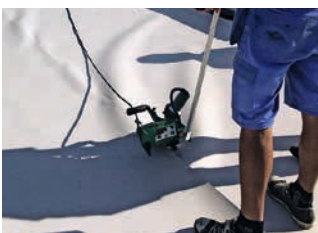
Easy to handle and user friendly due to optimal design and balance. Work now even more efficient with the LarOn H, the fastest automatic welding machine in the market. You choose your optimum welding speed anywhere between 1–20 mm/min.

Technical data		LarOn	LarOn H
Voltage	V	230 / 400	230 / 400
Frequency	Hz	50 / 60	50 / 60
Power consumption	W	4600 / 5700	4600 / 5700
Temperature	°F	68 – 1148	68 – 1148
Speed	ft / min	max. 22.97	max. 65.62
Size (l x w x h)	mm	610 x 410 x 320	610 x 410 x 320
Weight	lbs	77.16	83.78
Markings	CE	CE	CE

STEEPON

Safe welding, handy, field-tested

- designed for the most demanding job sites
- speed and temperature stepless adjustable
- for the welding of all roofing membranes
- for the work on flat and pitched roofs
- constant pressure, temperature and speed
- for loose laid membranes
- brushless, easy to maintain



Suitable for flat and steep/pitched roofs due to clamping system. For perfect welding seams on any underground.

Technical data

Voltage	V	120 / 230
Frequency	Hz	50 / 60
Power consumption	W	1800
Temperature	°F	max. 1112
Speed	ft / min	16.40
Size (l x w x h)	mm	360 x 330 x 310
Weight	lbs	17.64
Markings		CE

ROOFON, ROOFON DIGITAL

Small,
low-priced,
light

- for the welding of thermoplastic roofing membranes
- stepless adjustment of speed, air flow and temperature with potentiometer
- automatic drive start system
- wrinkle-free welding
- seam width of 40 mm
- digital control and read out of temperature and speed (RoofOn Digital, see picture below)



Perfect seam quality of 40 mm even though its very light weight. The RoofOn guarantees wrinkle-free welding through our unique technology.

Technical data			
Voltage	V	230 / 120	
Frequency	Hz	50 / 60	
Power consumption	W	3400 / 2900	
Temperature	°F	68 – 1112	
Speed	ft / min	1.64 – 39.37	
Air flow max. (68 °F)	l / min	500	
Air flow	%	50 – 100 stepless	
Noise level LpA	dB	64	
Size (l x w x h)	mm	450 x 330 x 220	
Weight	lbs	33.07 with 16.40 ft cord	
Protection class I		⊕	

ROOFON MULTI

User-friendly,
compact,
light

- for the welding of thermoplastic roofing membranes
- movable rollers
- digital control and read out of temperature and speed
- stepless adjustment of air flow
- automatic drive start system
- wrinkle-free welding



Discover the RoofOn Multi, the all-rounder for the work on small roofs and details.

Technical data		
Voltage	V	230
Frequency	Hz	50 / 60
Power consumption	W	3000
Temperature	°F	68 – 1148
Speed	ft / min	0 - 19.69
Air flow (68 °F)	l / min	500
Air flow	%	50 – 100
Noise level LpA	dB	64
Size (l x b x h)	mm	380 x 340 x 700 (incl. guide bar)
Weight	lbs	46.30
Markings		CE

BELTON T/P

Universal,
powerful,
high speed

- two welding seams in one operation
- for welding of thermoplastic tapes and profiles
- high welding performance
- easy maintenance because of standard controllers
- digital display showing temperature and speed
- automatic drive start system
- easy to convert to different tape widths



For welding of tapes, curtain tapes and tarpaulin bows on truck covers.

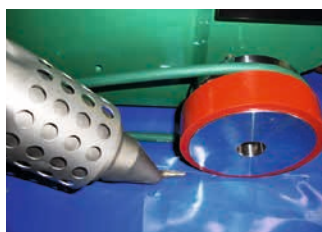
Economic and user friendly thanks to the high welding speed and simple design.

Technical data		
Voltage	V	400
Frequency	Hz	50 / 60
Power consumption	W	6400
Temperature	°F	68–1148
Speed	ft/min	max. 78.74
Tape width	mm	50 – 150
Size (l x w x h)	mm	900 x 530 x 340
Weight	lbs	85.98
Markings		CE

PLANON

**Simple,
robust,
competitive**

- for welding of coated fabrics, foils billboards, banners and tarps
- robust and mature technology
- automatic drive start system
- high welding speed
- economic and user-friendly
- adjustment of welding speed and temperature with potentiometer



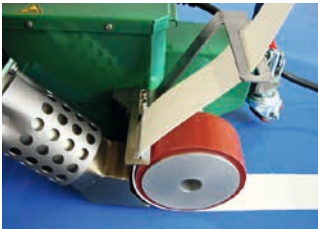
Simple to operate and very reliable because of robust design. Available for 20, 30 or 40 mm width welding seam.

Technical data		
Voltage	V	230/120
Frequency	Hz	50 / 60
Power consumption	W	3400 / 2900
Temperature	°F	68 – 1112
Speed	ft / min	1.64 – 39.37
Air flow max. (68 °F)	l/min	500
Air flow	%	50 – 100 variable
Noise level	dB	50
Size (l x w x h)	mm	460 x 360 x 310
Weight	lbs	30.86 with 16.40 ft cord
Protection class I		⊕
Markings		CE

PLANON-BAND

Clever,
inexpensive,
efficient

- for welding of thermoplastic tapes
- approved and robust technology
- automatic drive start system
- economic and user-friendly
- stepless adjustment of speed and temperature with potentiometer



For welding of tapes and curtain tapes on truck covers. Available for 40 or 50 mm width tapes.

Technical data		
Voltage	V	230
Frequency	Hz	50 / 60
Power consumption	W	3700
Temperature	°F	68 – 1112
Speed	ft / min	1.64 – 39.37
Air flow max. (68 °F)	l / min	500
Air flow	%	50 – 100 stepless
Noise level LpA	dB	50
Size (l x w x h)	mm	460 x 360 x 640
Weight	lbs	39.68 with 16.40 ft cord
Protection class I		⊕
Markings		CE

COMON 2

Adaptable, durable, efficient

- optimal performance/best price
- high welding capacity, speed and quality
- field tested electronics, service friendly
- maintenance-free servo drive motor
- stepless adjustment of pressure, speed, and temperature
- stable, lightweight and compact design
- material welding range: PE-LD, PE-HD, PE-C, PVC-P, PP, ECB, EVA, TPO
- welding range HD-PE: 1,0–3,0 mm



Simple, reliable operation combined with the maintenance-free servo motor and field tested electronics. The ComOn is designed for the most demanding jobsites.

Technical data		
Voltage	V	230
Frequency	Hz	50 / 60
Power consumption	W	1700
Temperature	°F	68 – 788
Speed	ft / min	2.62 – 16.40
Welding pressure	N	max. 1400
Size (l x w x h)	mm	460 x 300 x 330
Seam dimensions (other sizes on request)	mm	15 – 15 – 15
Weight	lbs	30.86
Markings		CE

MION

Compact, lightweight, handy

- small and light but with very high welding performance
- perfect for thin material and overhead welding
- powerful drive system
- patented high tech ceramic wedge
- stepless adjustment of all welding parameters
- user friendly operation
- material welding range: PE-LD, PE-HD, PE-C, PVC-P, PP, ECB, EVA, TPO



The smallest and lightest compact wedge welder in the world. For the welding of all different material without changing the wedge.

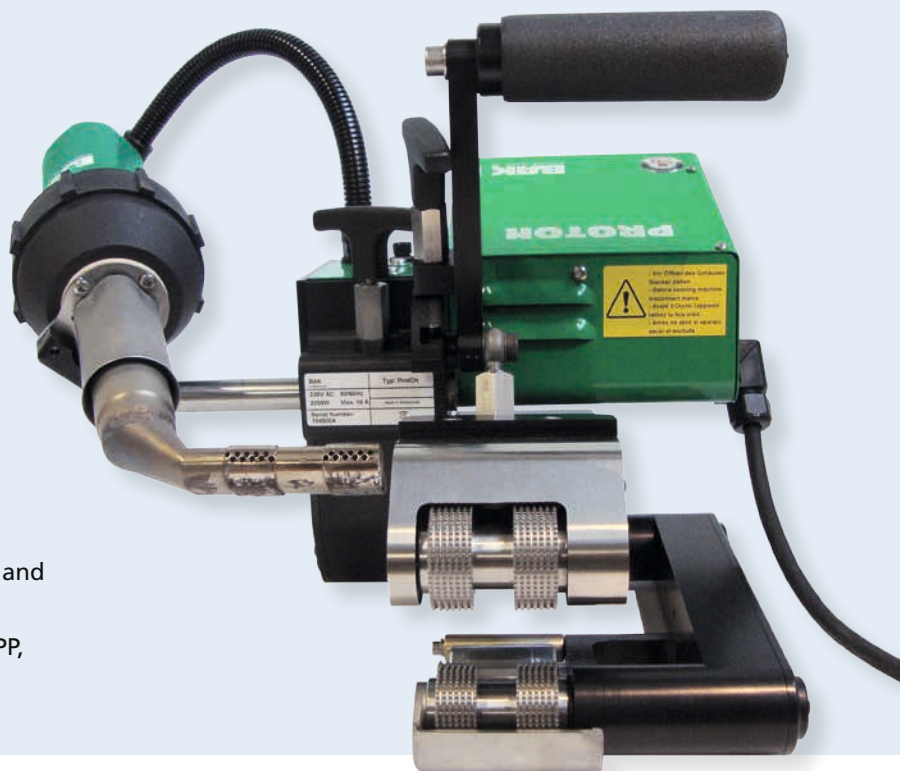
Technical data

Voltage	V	120 / 230
Frequency	Hz	50 / 60
Power consumption	W	1500
Temperature	°F	68 – 932
Speed	ft / min	2.62 – 18.04
Welding pressure	N	max. 1000
Size (l x w x h)	mm	210 x 210 x 210
Seam dimensions (other sizes on request)	mm	15 – 15 – 15
Weight	lbs	12.35 with 16.40 ft cord
Markings		CE

PROTON

User-friendly,
robust,
compact

- small, light and very robust
- drive and heater motor brushless
- for thin material and overhead welding
- simple to operate
- stepless adjustment of all welding parameters and air flow
- material welding range: PE-LD, PE-HD, PVC-P, PP, ECB, EVA, TPO



The small and light automatic welding machine to weld all different kind of materials. For civil engineering and tunnel construction. Drive- and heater motor brushless. Combined wedge with hot air and contact.

Technical data

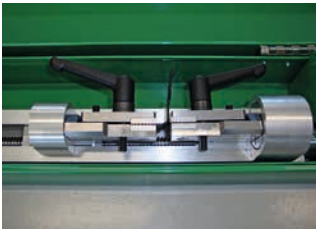
Voltage	V	230 / 120
Frequency	Hz	50 / 60
Power consumption	W	2300
Temperature	°F	max. 1022
Speed	ft / min	max. 16.40
Welding pressure	N	max. 1000
Size (l x w x h)	mm	370 x 340 x 330
Seam dimensions (other sizes on request)	mm	15 – 15 – 15
Weight	lbs	19.84
Markings		CE

TESTON

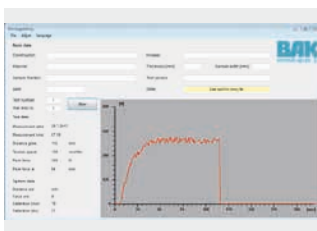
Reliable,
handy,
precise



- for shear- and tensile tests
- simple clamping of test material
- storage of data with USB-stick
- printout of data as graphic
- rotatable jaws



Tensiometer type TestOn for the quality control of your welding seam with easiest operation. High precision and recording even on the construction site.



Technical data

Voltage	V	115 – 230
Frequency	Hz	50 / 60
Power consumption	W	250
Tension force	N	max. 2000
Drive speed	mm / min	max. 200
Drive distance absolute	mm	max. 450
Size (l x w x h)	cm	105 x 15 x 16
Weight	lbs	32.63
Number of saved measurements		max. 64
External saving		USB-stick
Protection class I		⊕
Markings		CE

SOLON

Superior,
fast,
reliable

- for welding of thermoplastic floors and linoleum
- stepless adjustment of speed, air flow and temperature with potentiometer
- automatic drive start system
- optical wall switch with backlash make sure the machine stops at the wall and the floor is not burned
- integrated deroller system



Due to a high air flow the SolOn has a very strong welding capacity. User-friendly because of approved and safe technology.

Technical data		
Voltage	V	230 / 120
Frequency	Hz	50 / 60
Power consumption	W	3500 / 2900
Temperature	°F	68 – 1112
Speed	ft / min	1.64 – 39.37
Air flow max. (68 °F)	l / min	500
Air flow	%	50 – 100 stepless
Noise level LpA	dB	64
Size (l x w x h)	mm	460 x 360 x 500
Weight	lbs	35.27 with 16.40 ft cord
Protection class I		⊕

ROTON

**Handy,
precise,
reliable**

- cuts welding grooves into all different types of floor coverings
- enables cut grooves along the walls
- integrated dust exhaust fan
- two levels of cutting speed
- three-point rest during milling to even unevenness
- adjustable guide roller enables milling of nap covers
- simple changing of cutting blade

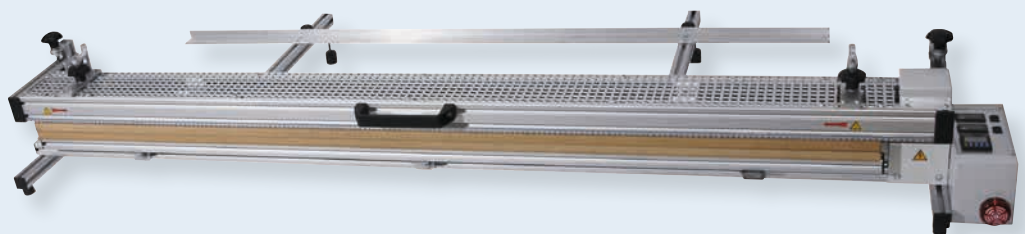


The reliable grooving machine to cut welding grooves into all different types of floor coverings without dust.

Technical data			
Voltage	V	230 / 120	
Frequency	Hz	50 / 60	
Power consumption level 1	W	350	
Power consumption level 2	W	700	
Speed level 1	U / min	14800	
Speed level 2	U / min	18500	
Noise level LpA	dB	78	
Groove depth adjustment	mm	0 – 4, stepless	
Size (l x w x h)	mm	210 x 210 x 262	
Weight	lbs	10.58 with 9.84 ft cord	
Markings		CE	

HEAT BATTEN

**Economic,
flexible,
low-priced**



- electronic controlled heating element
- digital display showing set and actual temperature
- timer with acoustic alarm
- parallel limit stop as accessory



The table heat batten for bending of thermoplastic material up to 12 mm thickness and films up to 1 mm.

Technical data		Table heat batten with single heating system	Table heat batten with upper- and lower heating system
Voltage	V	230	230
Frequency	Hz	50 / 60	50 / 60
Power consumption	W	500 – 1600 depending on working width	1400 – 3200
Max. working width	mm	500, 1000, 1500, 2000, 2500 or 3000	500, 1000, 1500, 2000, 2500 or 3000
Max. material thickness	mm	6	12
Weight	lbs	15.43 – 52.91	48.50 – 101.41
Protection class I		⊕	⊕

ACCESSORIES



**Pressure roller 28 mm
(silicon)**
Order no. 5106977



**Pressure roller with ball
bearings (brass)**
Order no. 5106972



**Angled nozzle
(Ø 32 mm) 20 mm 90°**
push fit
Order no. 5107124



**Pressure roller 40 mm
(silicon)**
Order no. 5106975



Fillet coater
Order no. 5201324



**Angled nozzle
(Ø 32 mm) 20 mm 60°**
push fit
Order no. 5107125



**Pressure roller 28 mm
(PTFE)**
Order no. 5106976



Chamfer plane
Order no. 5201445



**Wide slot nozzle
(Ø 32 mm)
30 x 2 mm 15°**
push fit
Order no. 5105494



**Pressure roller 40 mm
(PTFE)**
Order no. 5106971



Hand grooving tool
Order no. 5106966



**Wide slot nozzle
(Ø 32 mm) 40 mm**
push fit
Order no. 5107132



Pressure roller power
Silicon 40 mm 5106983
PTFE 40mm 5106984



Spatula
Order no. 5106969



**Wide slot nozzle
(Ø 32 mm) 40 mm
perforated**
push fit
Order no. 5107133



**Pressure roller 80 mm
(silicon)**
Order no. 5106974



Spatula slide
Order no. 5200092



Angled nozzle SP20
right Order no. 6660004
left Order no. 6660005



**Pressure roller 90 mm
(PTFE)**
Order no. 5800226



**Wide slot nozzle
(Ø 32 mm) 20 mm**
push fit
Order no. 5107123



**Wide slot nozzle
(Ø 50 mm) 70 x 10 mm**
Order no. 5107258

ACCESSORIES



Wide slot nozzle
(Ø 50 mm) 75 x 2 mm
Order no. 5107266



Tacking nozzle
screw on M14
Order no. 5106988



Adapter with thread
M10 (Ø 32 mm)
Order no. 5201013



Wide slot nozzle
(Ø 50 mm) 150 x 12 mm
Order no. 5107270



Drawing nozzle
screw on M14
Round 3 mm 5113876
Round 4 mm 5113874
Round 5 mm 5113875



Adapter with thread
M14 (Ø 32 mm)
Order no. 5201014



Tubular nozzle
(Ø 32 mm) 5 mm
push fit
Order no. 5100303



Drawing nozzle
with tacking tip
screw on M14
Round 3 mm 5113666
Round 4 mm 5113399
Round 5 mm 5113873



Sieve reflector
10 x 12 mm (Ø 8,25 mm)
push fit
on tubular nozzle 5 mm
Order no. 5107324



Tacking nozzle
push fit
on tubular nozzle 5 mm
Order no. 5106996



Drawing nozzle
without tacking tip
screw on M14
Profile 5,7 mm 5113877
Profile 7,0 mm 5106986



Sieve reflector
(Ø 32 mm) 35 x 20 mm
Order no. 6107338



Speed welding nozzle
push fit
on tubular nozzle 5 mm
Round 3 mm 5106989
Round 4 mm 5106990
Round 5 mm 5106991



Draw nozzle
with tacking tip
screw on M14
Profile 5,7 mm 5113670
Profile 7,0 mm 5113671



Sieve reflector
(Ø 32 mm) 50 x 35 mm
Order no. 6107337



Speed welding nozzle
push fit
on tubular nozzle 5 mm
Profile 5,7 mm 5106992
Profile 7,0 mm 5106993



Angled adapter
25° angular
for draw nozzle M14
Order no. 5201020



Scraper short 100 mm
Order no. 5200142



Tubular nozzle 5 mm
screw on M14
Order no. 5105622



Angled adapter
40° angular
for draw nozzle M14
Order no. 5201021



Scraper long 220 mm
Order no. 5200143



Scraper
Order no. 5106967



Keder kit PlanOn
20 mm Order no. 5230189
30 mm Order no. 5230192
40 mm Order no. 5230193



JAMAS Membrane cutter
Order no. 5201230



Scraper 2 edge
Order no. 5201470



**Guide handle
ProtOn / SteepOn**
Order no. 6600298



Test needle PVC
Order no. 5201700



Scraper 3 edge
Order no. 5201440



Walking support MicOn
Order no. 6600319



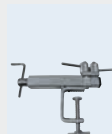
Test needle PE
Order no. DX073



**Scraper with
double handle**
Order no. 5200140



**Bitumen welding kit
LarOn**
80 mm Order no. 6108923
100 mm Order no. 6108924



Tensiometer Handy
Order no. 5200171



Welding seam planer
Order no. 5200146



**Metal case
RiOn / ErOn**
Order no. 5201000



Sheet puller
Order no. DX071



**Hook knife
with cover**
Order no. 5800000



Metal case LarOn
Order no. 5201001



**Carbide blade
for RotOn**
Round 2,8 mm 6102403
Round 3,5 mm 6102405
Trapeze 3,5 mm 6102401



Hem kit PlanOn
Adjustable for hem width
20, 25, 30, 35, 40 mm
Order no. 5230109



**Metal case
PlanOn / RoofOn /
ComOn / SteepOn**
Order no. 5201008
RoofOn Multi
Order no. 5232551



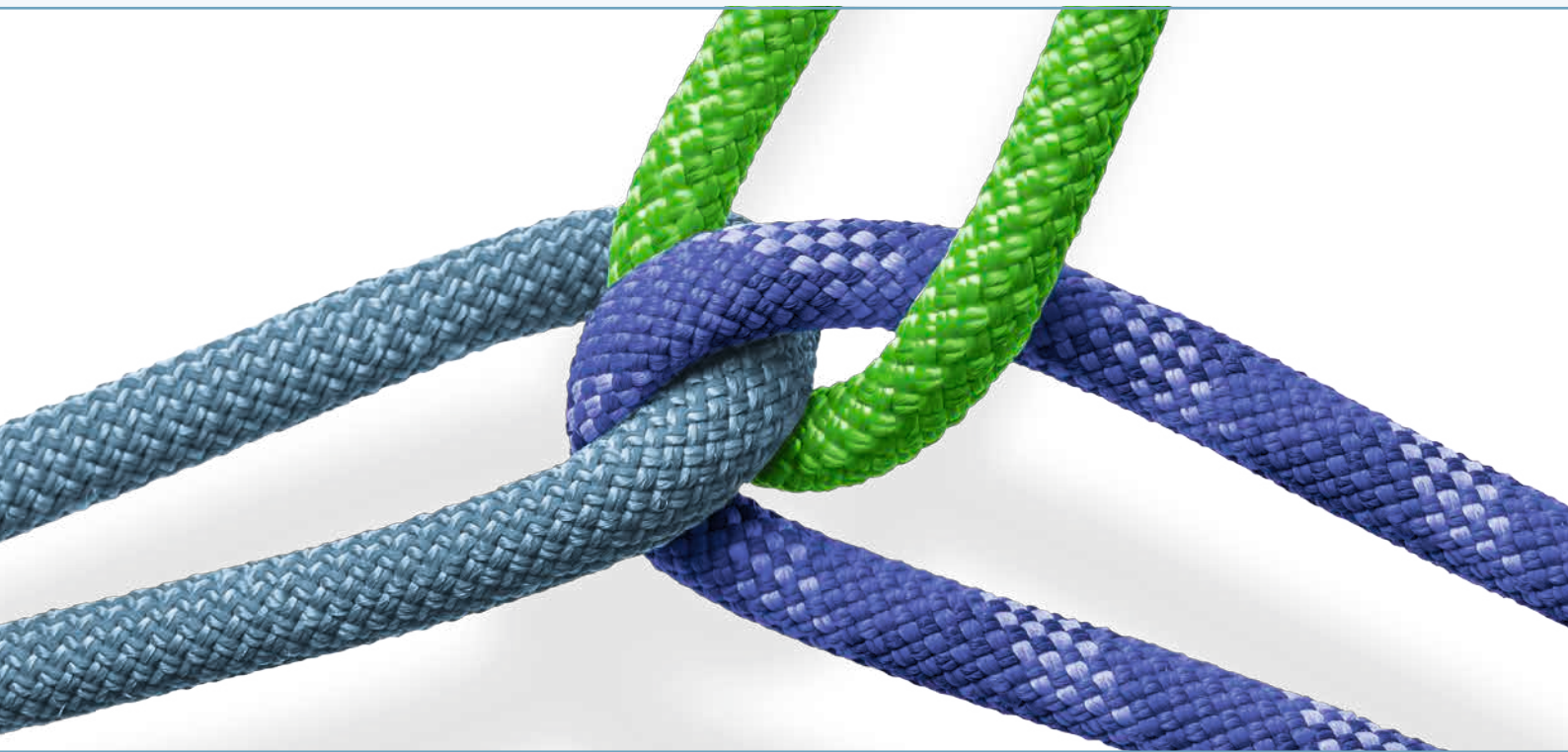
Welding rod
Different types, profiles and
colours

HeatOn-GROUP

— YOUR BEST CHOICE —

Consulting – Sales – Training – Service – Development

Beratung – Verkauf – Schulung – Service – Entwicklung



HAPCO INC

390 Portage Blvd., Kent, OH 44240

800-345-9353

info@hapcoinc.com • <https://hapcoinc.com>